

Hinged Steel Belt Conveyors



Drag Flight Conveyors



Magnetic Conveyors



Permanent Media Drum Filtration System



Filterveyor®

EcoFilter® Conveyor & Filtration System



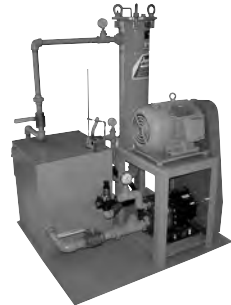
Gravity Media Filters



Vacuum Media Filters



High Pressure Coolant Systems



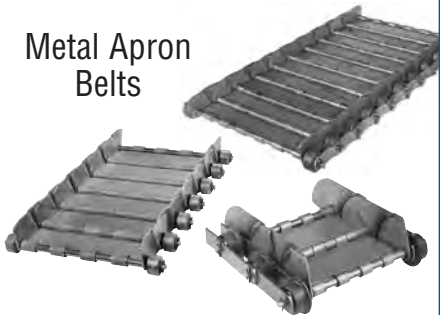
Wire Mesh Belt Conveyors



MunchMan II® Dual Belt Conveyor



Metal Apron Belts



Slat Conveyors



**Jorgensen**  
CONVEYORS, INC.

# 9" Pitch Hinged Steel Belt Conveyors



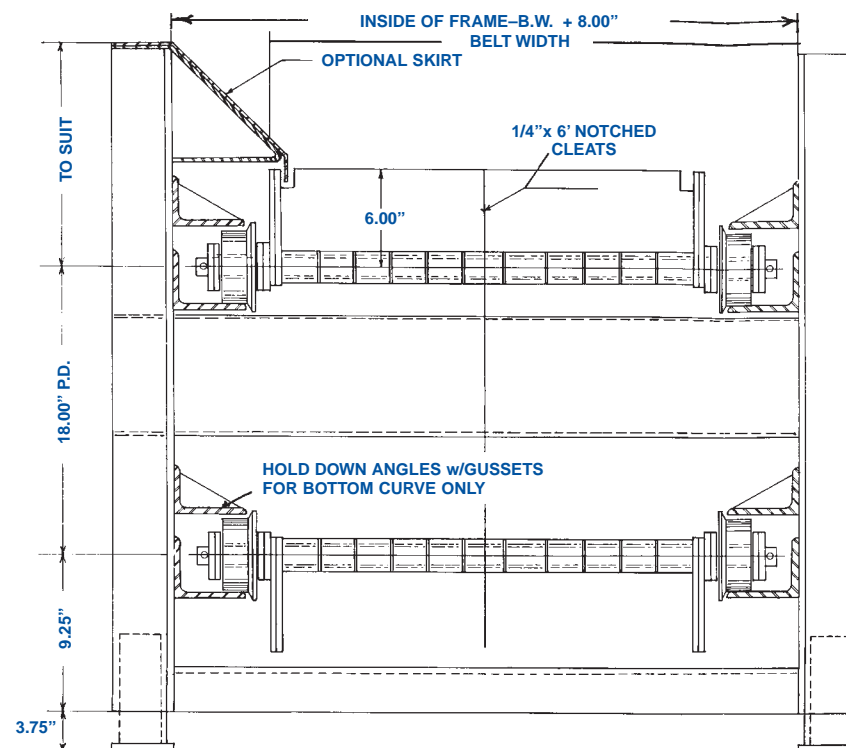
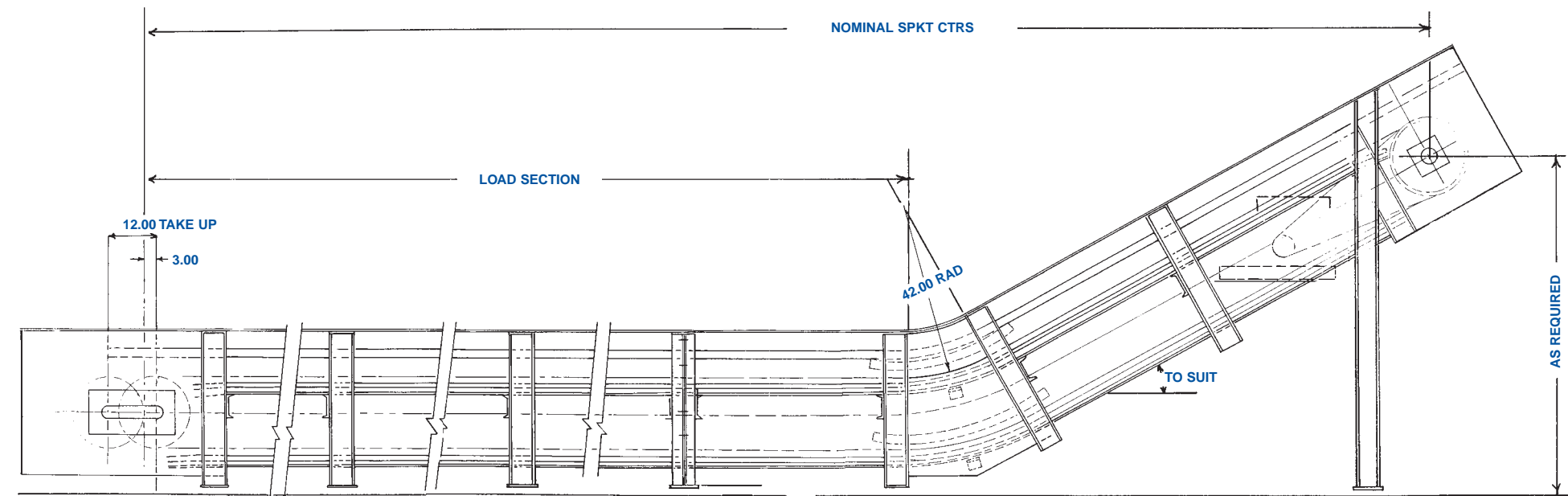
**Jorgensen**  
CONVEYORS, INC.

10303 N. Baehr Road  
Mequon, Wisconsin 53092-4611  
Phone: (262) 242-3089 or (800) 325-7705  
Fax: (262) 242-4382  
E-Mail: [info@jorgensenconveyors.com](mailto:info@jorgensenconveyors.com)  
[www.jorgensenconveyors.com](http://www.jorgensenconveyors.com)

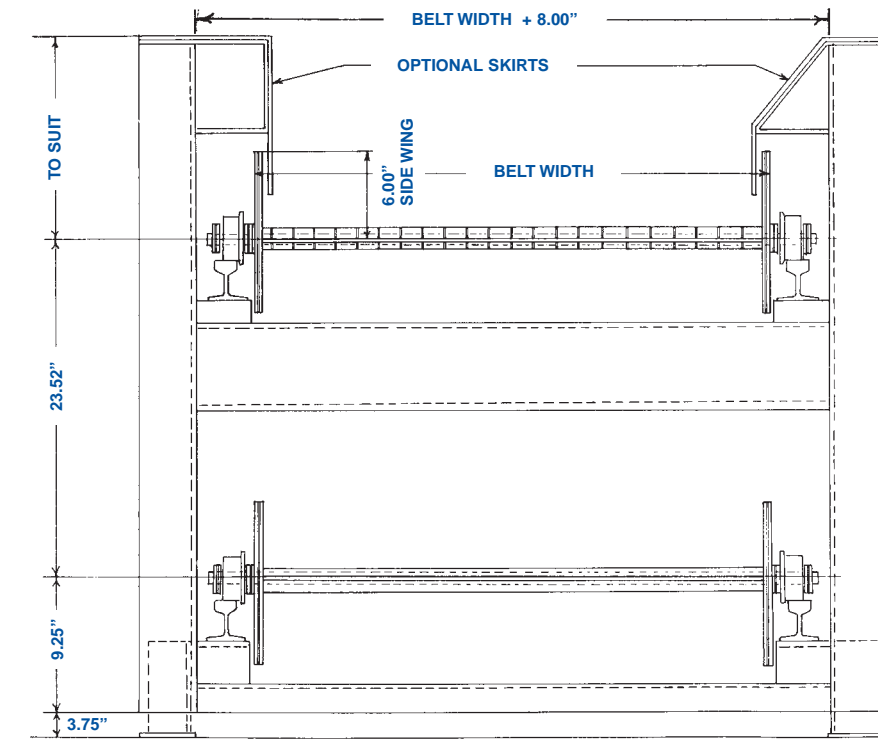


## APPLICATION:

- Ideally applicable for long and central collector conveyors in systems.
- Heavy scrap and parts conveying.
- Heavy duty applications where lighter duty conveyors are not applicable.



CROSS SECTION WITH #USA-900 BELT



CROSS SECTION WITH #USA-901 BELT

## EXAMPLES:

Steel Mills  
Forge Shops  
Die Cast Shops  
Scrap Handling  
Refuse Handling

### NO. USA-900 SPECIFICATIONS

**PITCH:** 9" – accuracy held to plus or minus .001"

**APRON PLATES:** Special No. 5 gauge steel with integral formed hinge loop for thru spanner tube formed with precision dies with hinge loops accurately straightened by special sizing equipment. Can be furnished plain, perforated, or pimped.

**SIDE WINGS:** Exclusive J.C.I. radial design feature of special 1/4" thick Exten steel welded to form a continuous overlapping side with close tolerances arranged for thru axle to pass thru to form an integral apron. Flush surface on inside.

**SIDE BARS:** Inside and outside chain 1/4" thick Exten steel side bars.

**SPANNER TUBES:** Special 1" O.D. with close tolerances to insure strength and maintain flexibility.

**THRU ROD:** 3/4" diameter–C-1045 C.R. steel, ends heat treated and milled for side bar to prevent rod from rotating.

**CHAIN BUSHINGS:** Heavy wall for accuracy and roundness with ends milled to fit special punched side bar to prevent rotating.

**ROLLERS:** 2 1/2" diameter x 1 1/16" tread, 3" diameter single flange, with 1 1/8" tread, or 4" diameter single flange with 1 7/16" tread. Chrome-nickel alloy iron with bore held to .002" tolerance on bushing. 4" diameter rollers can be furnished with roller bearing hubs and threaded thru rods with locknuts.

• Cast or flame cut sprockets with various number of teeth and bores available.